



01.jpg



02.jpg



03.jpg



04.jpg



05.jpg



06.jpg



07.jpg



08.jpg



09.jpg



10.jpg



11.jpg



12.jpg



13.jpg



14.jpg



15.jpg



16.jpg



17.jpg



18.jpg



19.jpg



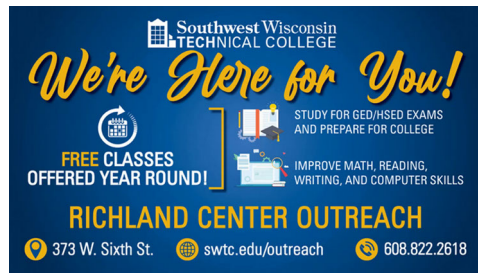
20.jpg



21.jpg



22.jpg



23.jpg



24.jpg



25.jpg



26.jpg



27.jpg

**\$120.00** register in advance

**MILWAUKEE BREWERS**

**GAME & TAILGATE PARTY**  
Sponsored by Urban Scenic Travel

**JULY 18**

Departing from the Richland Center Community Center at 9:00 AM  
For more information and to register contact Cheryl at the Woodman Senior Center at 608-647-8108 ext. 3

3:10 PM vs Miami Marlins

28.jpg

**AGING & DISABILITY RESOURCE CENTER OFFERS:**

**Caregiver Support Group**  
10:30 AM the fourth Tuesday of every month.

29.jpg

**CRIME STOPPERS MEETING**

The second Tuesday of the Month from 2-3:30PM in the RC Community Center Meeting Room

30.jpg

**Richland Center Parks & Recreation**

**DID YOU KNOW...**

24 laps in the gym = 1 mile

31.jpg

**Diamond Jo Casino Bus Trip**

**May 7**  
\$40 per person

Contact Cheryl in the Woodman Senior Center  
608-647-8108 ext. 3 to register.

32.jpg

**RC Parks & Rec Trailblazers Walking Group**

Tuesdays & Thursdays 10-11am  
May-September Outdoor Walking Open to all ages!

33.jpg

**f** Follow us on Facebook at Richland Center Parks and Recreation

34.jpg

**RACE FOR GRACE Help Fight Cancer**

5K Run/Walk, 3.5 Mile Trail Run & 1<sup>st</sup> Responder Challenge  
May 9<sup>th</sup> - RCHS Track  
Register at: [walkwithgrace.com](http://walkwithgrace.com)

35.jpg

**PRATT FUNERAL AND CREMATION SERVICE**  
Serving Richland County for over 130 years.

Mark Jelinek Nick Hodge

Richland Center 608-647-4808 Muscoda 608-739-3511  
[www.prattfuneralservice.com](http://www.prattfuneralservice.com)

36.jpg

If you notice one of our monitors not working or would like to see Your AD Here please,

**Call Us**  
**815-872-5040**

Visual Solutions Visual Solutions Visual Solutions Visual Solutions Visual Solutions

37.jpg

Gentle Chair Yoga with Lara

In the Senior Center on Wednesdays at 9:45AM

38.jpg

**GRACE**  
 Greater Richland Area Cancer Elimination

Walk with Grace  
**Pancake Supper**  
**May 14<sup>th</sup>**  
 4:30 - 7:00 pm  
 © RC Community Center

39.jpg

**Richland Center Community and Senior Center Hours:**  
**Monday-Friday**  
**8:00am-4:30pm**

Richland  
 PARKS & RECREATION

40.jpg

**SUMMER RESOURCE FAIR**  
**WEDNESDAY, MAY 20**  
**3:00 PM - 6:00 PM**

1800 N Orange Street  
 Richland Center

ENJOY A FREE MEAL FOR ALL ATTENDEES Sponsored by Richland Center

• SIGN UP FOR SUMMER PROGRAMS & ACTIVITIES

• LEARN ABOUT EVENTS & ATTRACTIONS

• MEET WITH MANY TOURISM BUSINESSES & SERVICE PROVIDERS

PRESENTED IN PARTNERSHIP BY Greater Richland Tourism & City Offices of Richland Center

41.jpg

**Martial Arts**  
**Community Center Meeting Room**

Contact **TROY JONES** at  
**(608) 440-5107**  
 for more information.

Richland  
 PARKS & RECREATION

42.jpg

**BINGO**  
**for PRIZES**  
**MONDAYS**  
**9:30 - 11:30AM**

SENIOR CENTER

43.jpg

**Richland**  
 GREATER  
 TOURISM

CHECK OUT RICHLAND CENTER TOURISM  
[www.richlandcentertourism.com](http://www.richlandcentertourism.com)

44.jpg

**RAMADA**

Our amenities include:  
 • Heated indoor pool  
 • Restaurant and Lounge onsite  
 • Room service, Free wifi  
 • Meeting space  
 • Lots of parking

Proud supporter of Walk with Grace  
 608-647-8869 • 1450 Veterans Dr • Richland Center, WI

45.jpg

# Senior Bus Trips

Contact Cheryl in the Senior Center 647-8108 ext 3

46.jpg

2026 **Richland** PARKS & RECREATION

## SPRING/SUMMER ACTIVITY GUIDE

Sign up is now available for **SUMMER RECREATION** programs!

**Richland CENTER** PARKS & RECREATION

1020 N. Orange Street | 608-647-8108 | www.richlandcenterwi.gov  
 Facebook: Richland Center Parks and Recreation

47.jpg

608-647-2138  
29551 Circle View Lane

**Pine Valley** Community Village

www.pinevalleycommunity.org

**SERVICES**

- Assisted Living Center
- Skilled Nursing Center
- Rehabilitation Center
- Pharmacy services can be provided 24 hours a day
- Private rooms with individual temperature control
- Outpatient therapy
- On site dental, podiatry, audiology and vision

48.jpg

**Richland County Nutrition Program**

Senior Meal Site

For information Call 647-2323 to order your meals

49.jpg

THANKS FOR YOUR SUPPORT!

Woodman Aquatic Facility  
2020 WPRA Outstanding Facility Design Award

**Richland CENTER** PARKS & RECREATION

50.jpg

SUPPORT OUR LOCAL BUSINESSES.

Shop Local

51.jpg

**Richland** PARKS & RECREATION

# Now Hiring Lifeguards!

Applications can be found online at [www.richlandcenterwi.gov/jobs](http://www.richlandcenterwi.gov/jobs) or at the Parks & Rec office.

52.jpg

**RICHLAND COUNTY BANK**

"Wherever there are trees, we have our roots."

Lost or Stolen Debit Card??

If your Debit Card is missing, we will help to protect you. Give us a call immediately! 608-647-6306

After Hours: 1-866-546-8273

Lobby Hours: Monday - Thursday 9:00 am - 6:00 pm, Closed by Appointment; Friday 9:00 am - 5:00 pm, Closed by Appointment; Saturday by Appointment

195 West Court Street  
Richland Center, WI 53581  
PHONE - 608-647-6306  
richlandcountybank.com

Member FDIC

Drive Thru & Walk Up Teller Hours: Monday - Friday 8:00am - 3:00pm; Saturday 8:00am - 12:00pm

53.jpg

Join a Community Garden in Richland Center and GROW!

Garden plots are available at Mill Pond and Northside Gardens.

For more information, contact the Parks & Rec Office at 647-8108.

**Richland CENTER** PARKS & RECREATION

54.jpg



55.jpg



56.jpg



57.jpg



58.jpg



59.jpg



60.jpg



61.jpg



62.jpg